

An aerial photograph of a large, red industrial building with a white roof and two large white roll-up doors. The building is situated on a vast, mostly dirt-covered lot. Various pieces of heavy machinery, including a yellow front loader, a red truck, and several semi-trucks, are parked on the lot. In the background, there are other industrial structures and a line of trees under a clear sky.

**Don't Wait to Buy Real Estate,
Buy Real Estate and Wait.**

2451 W. Murphy Street, Odessa, TX 79763 | www.investtexas.com



Highlights

User/developer land available in Odessa, Texas. Property is located next to a railroad and includes a 5,000 SF Shop, single family home and multiple warehouses.

Property Details

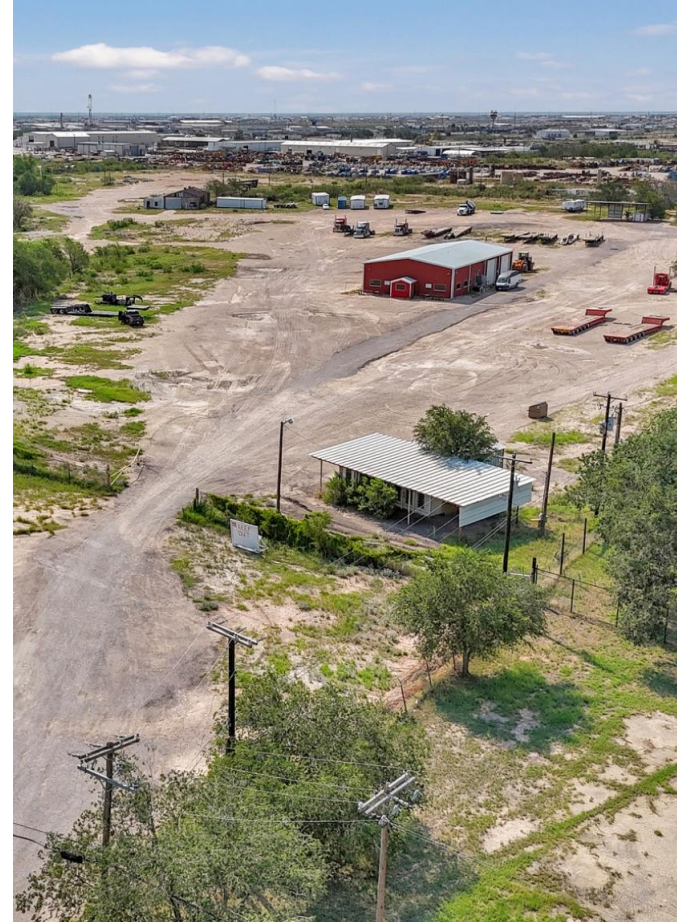
Sale Price	\$1,950,000
Lot Size	27.74 Acres
Shop Size	5,000 SqFt





2451 W. Murphy Street
Odessa, TX 79763
www.investtexas.com





2451 W. Murphy Street
Odessa, TX 79763
www.investtexas.com


Invest Texas
REAL ESTATE





Location Overview: Permian Basin

The Permian Basin spans approximately 250 miles wide and 300 miles long across western Texas and southeastern New Mexico. It's the most prolific oil-producing region in the U.S., contributing nearly half of the nation's crude output. The basin comprises three primary sub-regions: the Midland Basin, Delaware Basin, and Central Basin Platform.



Industry Trends



Production Growth: As of early 2025, the Permian Basin's oil production has reached approximately **6.2 million barrels per day (bpd)**, marking a 7.5% increase from the previous year (source: [YCharts](#)).



Rig Count: The number of active drilling rigs in the basin stands at 291, a slight increase from earlier in the year but still down 4% compared to the same period last year (source: [Midland Reporter-Telegram](#)).



Investment Activity: Despite some market volatility, companies like U.S. Energy Development Corporation plan to invest up to \$1 billion in Permian projects throughout 2025, indicating **sustained confidence** in the region's potential (source: [Oil Gas Leads+IPR Newswire+1](#)).



Oil production and rig count in the Permian Basin, 2012–2024.

Blue line = oil output (million barrels per day); Red line = active drilling rigs.

Production has hit record highs despite a lower rig count in recent years (source: [dallasfed.org](#))



Creating Wealth Through Real Estate

Invest Texas Real Estate, LLC is a premier commercial brokerage dedicated to delivering tailored, client-focused solutions across investment, land, and commercial transactions, leveraging deep market expertise, innovative strategies, and a commitment to accountability, integrity, and long term relationships.

Blake Loyd

Sales Associate
(432) 934-7822
Loyd@InvestTexas.com

Lance White

Co-Owner/Broker
(432) 894-2193
White@InvestTexas.com



Investment



Land



Commercial