



**Don't Wait to Buy Real Estate,  
Buy Real Estate and Wait.**

2451 W. Murphy Street, Odessa, TX 79763 | [www.investtexas.com](http://www.investtexas.com)



## Highlights

User/developer land available in Odessa, Texas. Property is located next to a railroad and includes a 5,000 SF Shop, single family home and multiple warehouses.

### Property Details

<b>Sale Price</b>	<b>\$2,300,000</b>
Lot Size	27.74 Acres
Shop Size	5,000 SqFt





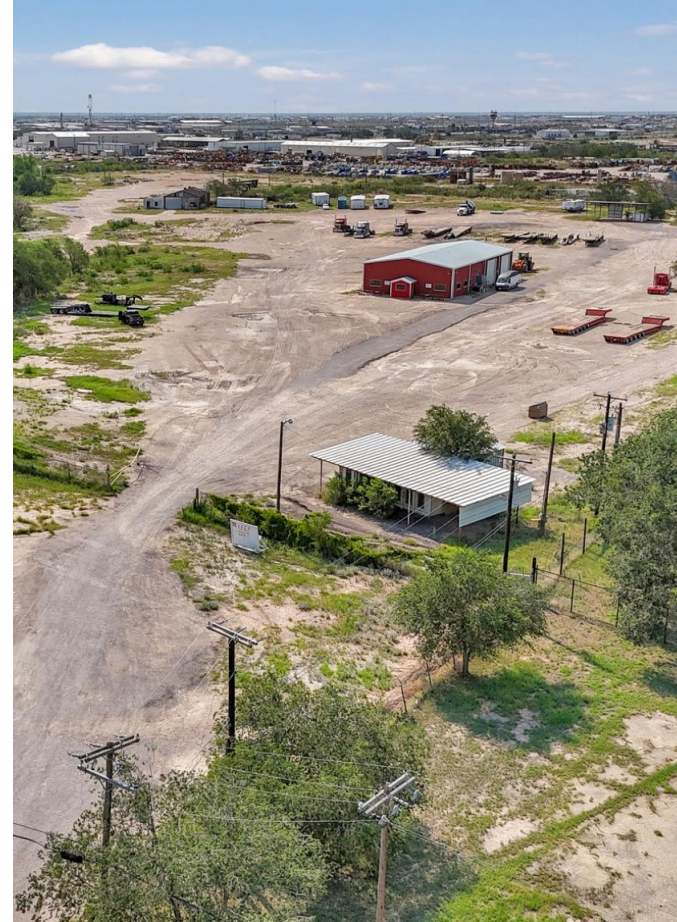




2451 W. Murphy Street  
Odessa, TX 79763  
[www.investtexas.com](http://www.investtexas.com)







2451 W. Murphy Street  
Odessa, TX 79763  
[www.investtexas.com](http://www.investtexas.com)

  
**Invest Texas**  
REAL ESTATE









The Permian Basin spans approximately 250 miles wide and 300 miles long across western Texas and southeastern New Mexico. It's the most prolific oil-producing region in the U.S., contributing nearly half of the nation's crude output. The basin comprises three primary sub-regions: the Midland Basin, Delaware Basin, and Central Basin Platform.



*Oil production and rig count in the Permian Basin, 2012–2024.*

*Blue line = oil output (million barrels per day); Red line = active drilling rigs.*

*Production has hit record highs despite a lower rig count in recent years (source: [dallasfed.org](https://dallasfed.org))*

# Location Overview: Permian Basin

## Industry Trends



Production Growth: As of early 2025, the Permian Basin's oil production has reached approximately **6.2 million barrels per day (bpd)**, marking a 7.5% increase from the previous year (source: [YCharts](https://ycharts.com)).



Rig Count: The number of active drilling rigs in the basin stands at 291, a slight increase from earlier in the year but still down 4% compared to the same period last year (source: [Midland Reporter-Telegram](https://midlandreporter-telegram.com))



Investment Activity: Despite some market volatility, companies like U.S. Energy Development Corporation plan to invest up to \$1 billion in Permian projects throughout 2025, indicating **sustained confidence** in the region's potential (source: [Oil Gas Leads+IPR Newswire+1](https://oilgasleads.com))





## Creating Wealth Through Real Estate

Invest Texas Real Estate, LLC is a premier commercial brokerage dedicated to delivering tailored, client-focused solutions across investment, land, and commercial transactions, leveraging deep market expertise, innovative strategies, and a commitment to accountability, integrity, and long term relationships.

### Blake Loyd

---

Sales Associate  
(432) 934-7822  
Loyd@InvestTexas.com

### Lance White

---

Co-Owner/Broker  
(432) 894-2193  
White@InvestTexas.com



**Investment**



**Land**



**Commercial**