



**Don't wait to buy real estate,
buy real estate and wait.**

3115 N. County Rd 1107 Midland, TX 79706 | www.investtexas.com



Highlights

Industrial property available for lease near I-20. The 6,250 SF facility sits on 1.4 acres on N County Rd 1107, offering excellent access and functionality for industrial operations.

Lease Details

Rate	\$16/SF/YR
Monthly rent	\$8,333
Initial lease term	3 year min
Lease structure	Triple Net (NNN)
Building Size	6,250 SqFt
Lot Size	1.4 Acres

Building Highlights



6,250 SqFt

Wash bay

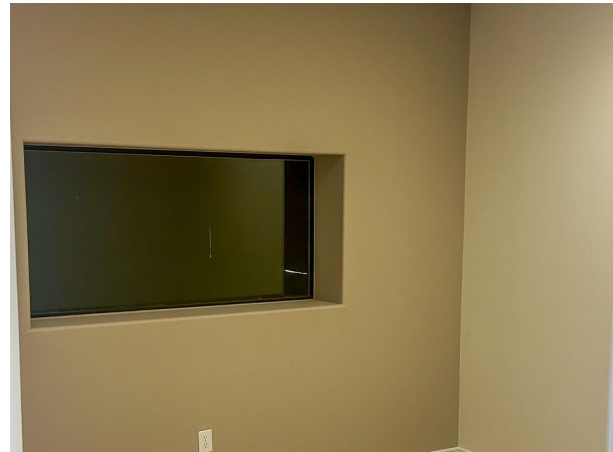
4 offices

Built in 2016





3115 N County Rd 1107
 Midland, TX 79705
www.investtexas.com



3115 N County Rd 1107
Midland, TX 79705
www.investtexas.com


Invest Texas
REAL ESTATE

CONTACT US

Don't miss this chance to invest in a prime industrial property with excellent income potential! For more information or to schedule a viewing, please contact us today.

Let us help you secure your next investment!

Invest Texas Real Estate

5400 N. Big Spring Street
Suite B Midland, Texas 79705
(432) 777-7022
www.investtexas.com

Robert LaFrance

Co-Owner/Broker
254-855-9179
lafrance@investtexas.com

Lance White

Co-Owner/Broker
432-894-2193
white@investtexas.com