



**Don't wait to buy real estate,
buy real estate and wait.**

New Construction: 5902 W County Rd 135 Midland, TX 79706 | www.investtexas.com



**AI generated mockup for visual*

Highlights

New construction in the Antelope Trail industrial hub, one of the Permian Basin's premier locations. Estimated completion: September 1, 2025. Includes 1,800 SF of office (expandable to 3,600 SF) and 9,000 SF of shop space, with optional shop and wash bay add-ons.

Property Details

Lease Rate	\$23/SF/YR
Monthly Rate	\$20,700
Lot Size	5.68 Acres
Building Size	10,800 SqFt
Office	1,800 SqFt
Shop	9,000 SqFt

Office Details



**AI generated mockup for visual*

5902 WCR 135 Midland, TX 79706



6 Offices



Conference Room



3 Total Bathrooms



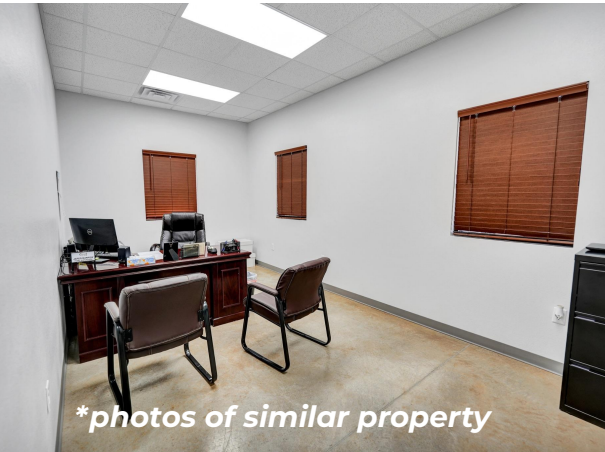
Breakroom



Reception



1,800 SqFt Unfinished Mezzanine



**photos of similar property*

5902 WCR 135
Midland, TX 79706
www.investtexas.com


Invest Texas
REAL ESTATE

Shop Details

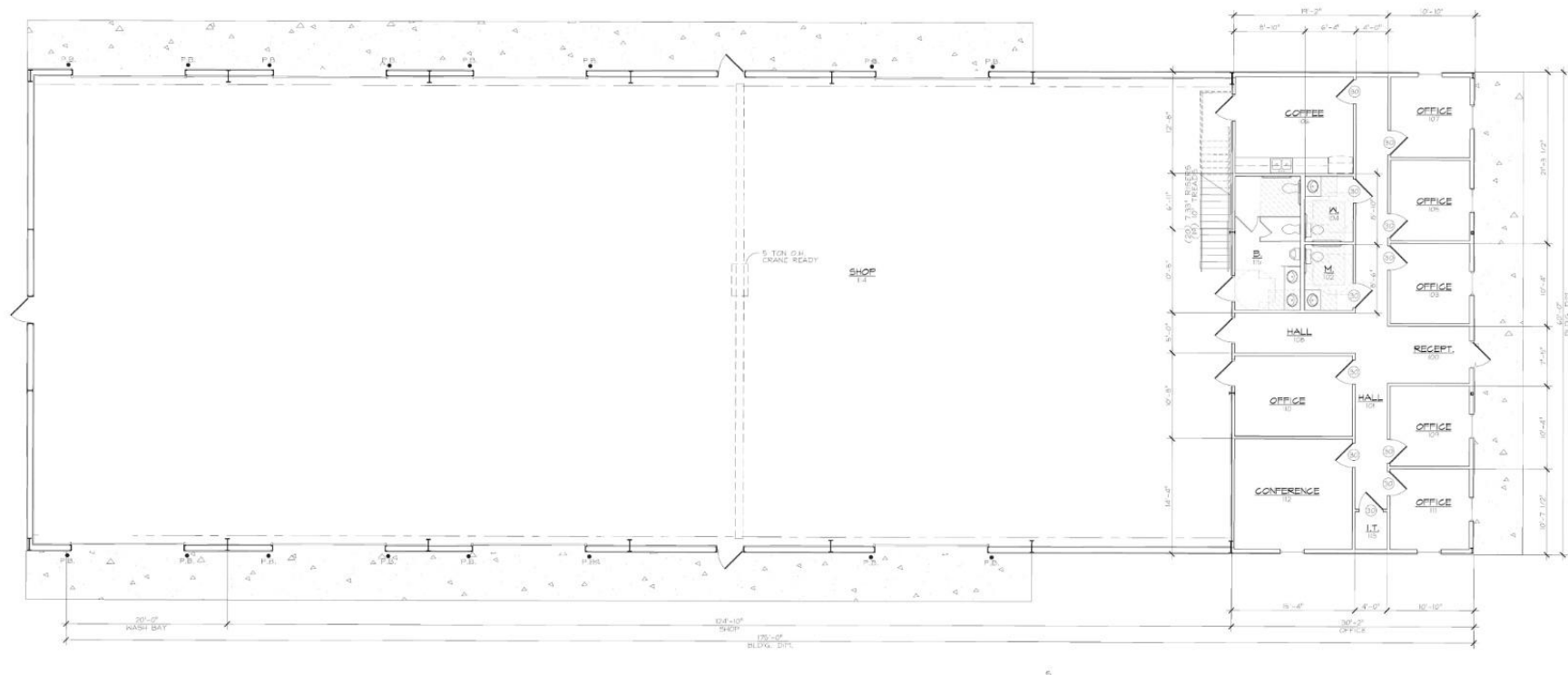
9,000 SqFt of shop space for your operational needs

- 5-ton crane ready
- Optional wash bay buildout
- Additional shop space can be added

**photos of similar property*



Floor Plan





Creating Wealth Through Real Estate

Invest Texas Real Estate, LLC is a premier commercial brokerage dedicated to delivering tailored, client-focused solutions across investment, land, and commercial transactions, leveraging deep market expertise, innovative strategies, and a commitment to accountability, integrity, and long term relationships.

Tyler Hudgins

Sales Associate
(432) 634-8057
Hudgins@InvestTexas.com

Lance White

Co-Owner/Broker
(432) 894-2193
White@InvestTexas.com



Investment



Land



Commercial