

An aerial photograph of an industrial property. In the foreground, a large, light-colored metal building with a blue roof and two large white roll-up doors is visible. To its left is a fenced-in area with a gate and a small blue shed. The background shows a large parking lot filled with various vehicles, including trucks and trailers, and several other industrial buildings. The surrounding landscape is arid with sparse vegetation.

**Don't Wait to Buy Real Estate,  
Buy Real Estate and Wait.**

For Lease: 10400 W. County Rd 72 Midland, TX 79707 | [www.investtexas.com](http://www.investtexas.com)



## Highlights

This 5,500 SF industrial building on 1.66 acres features an office space, shop space, wash bay and two 14'x16' overhead doors.

### Property Details

Lease Rate	\$17/SF/YR
Monthly Rate	\$7,800/Mo
Building Size	5,500 SqFt
Lot Size	1.66 Acres
Year Built	2015





10400 W. County Rd 72  
Midland, TX 79707  
[www.investtexas.com](http://www.investtexas.com)



# Features



1,250 SqFt Office



3,750 SqFt Shop



500 SqFt Wash Bay



(2) 14X16 OH Doors



3 Offices



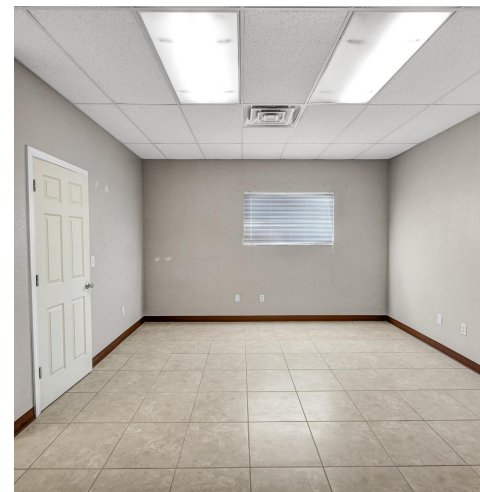


10400 W. County Rd 72  
Midland, TX 79707  
[www.investtexas.com](http://www.investtexas.com)

  
**Invest Texas**  
REAL ESTATE





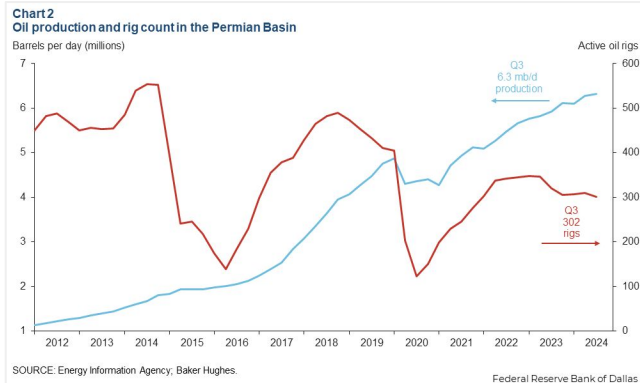
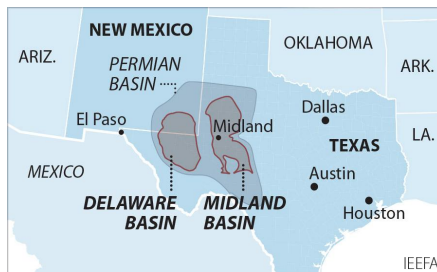








The Permian Basin spans approximately 250 miles wide and 300 miles long across western Texas and southeastern New Mexico. It's the most prolific oil-producing region in the U.S., contributing nearly half of the nation's crude output. The basin comprises three primary sub-regions: the Midland Basin, Delaware Basin, and Central Basin Platform.



*Oil production and rig count in the Permian Basin, 2012–2024.*

*Blue line = oil output (million barrels per day); Red line = active drilling rigs.*

*Production has hit record highs despite a lower rig count in recent years (source: [dallasfed.org](https://dallasfed.org))*

## Location Overview: Permian Basin

### Industry Trends



**Production Growth:** As of early 2025, the Permian Basin's oil production has reached approximately **6.2 million barrels per day (bpd)**, marking a 7.5% increase from the previous year (source: [YCharts](https://ycharts.com)).



**Rig Count:** The number of active drilling rigs in the basin stands at 291, a slight increase from earlier in the year but still down 4% compared to the same period last year (source: [Midland Reporter-Telegram](https://midlandreporter-telegram.com))



**Investment Activity:** Despite some market volatility, companies like U.S. Energy Development Corporation plan to invest up to \$1 billion in Permian projects throughout 2025, indicating **sustained confidence** in the region's potential (source: [Oil Gas Leads+IPR Newswire+1](https://oilgasleads.com))



## Creating Wealth Through Real Estate

Invest Texas Real Estate, LLC is a premier commercial brokerage dedicated to delivering tailored, client-focused solutions across investment, land, and commercial transactions, leveraging deep market expertise, innovative strategies, and a commitment to accountability, integrity, and long term relationships.

### Lance White

---

Co-Owner/Broker

(432) 894-2193

White@InvestTexas.com

### Robert LaFrance

---

Co-Owner/Associate

(254) 855-9179

LaFrance@InvestTexas.com



**Investment**



**Land**



**Commercial**