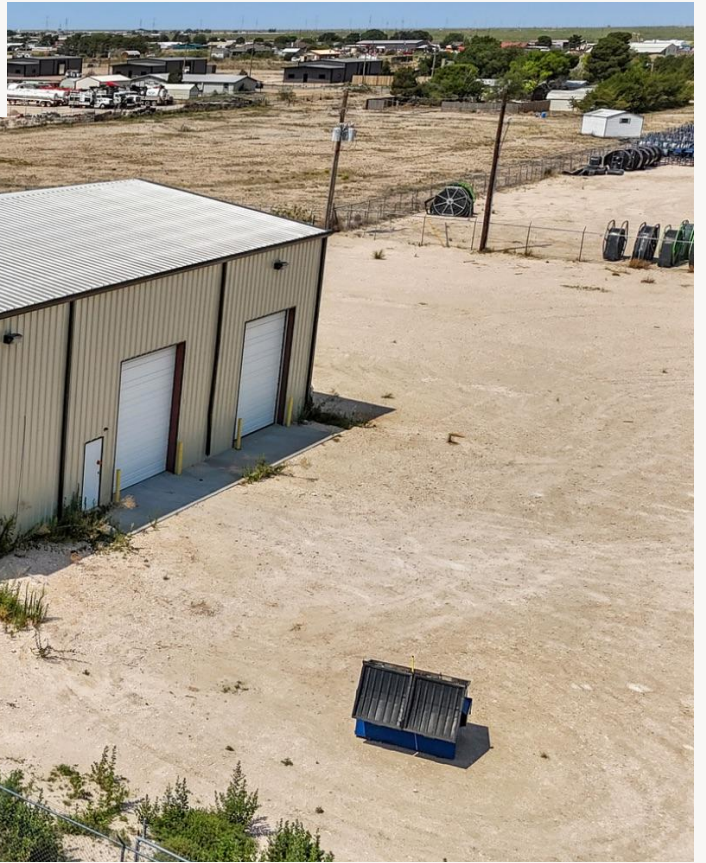





Invest Texas
REAL ESTATE



For Lease: 11424-A W. County Rd 35 Midland, TX 79707 | www.investtexas.com



11424-A W. County Rd 35 | Midland, TX 79707

Highlights

Now available for lease: a 5,000 SF industrial building on 2 acres at 11424-A WCR 35, ideally suited for light industrial or service operations. The property features 1,250 SF of office space with 4 private offices, 3,750 SF of shop space, and four 12'x14' overhead doors for easy equipment access.

Property Details

Lease Rate	\$18/SF/YR
Monthly Rate	\$7,500
NNN Expenses	\$498
Lot Size	2 Acres
Building Size	5,000 SqFt
Year Built	2016



11424-A W. County Rd 35
Midland, TX 79707
www.investtexas.com



Features



1,250 SqFt Office Space



3,750 SqFt Shop Space



4 Offices



(4) 12 X 14 OH Doors



22' Eave Height



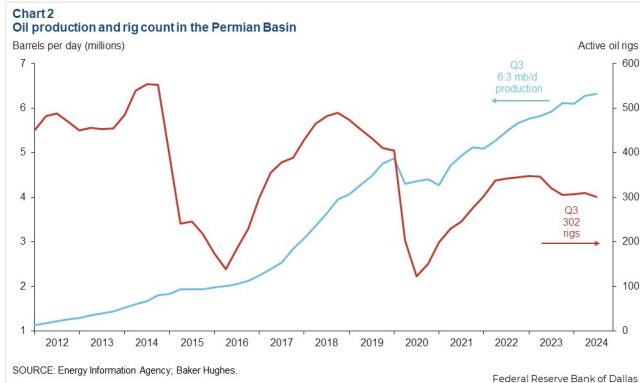
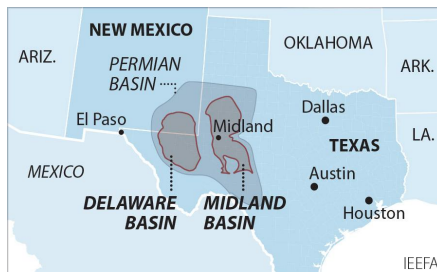
11424-A W. County Rd 35
Midland, TX 79707
www.investtexas.com


Invest Texas
REAL ESTATE





The Permian Basin spans approximately 250 miles wide and 300 miles long across western Texas and southeastern New Mexico. It's the most prolific oil-producing region in the U.S., contributing nearly half of the nation's crude output. The basin comprises three primary sub-regions: the Midland Basin, Delaware Basin, and Central Basin Platform.



Oil production and rig count in the Permian Basin, 2012–2024.

Blue line = oil output (million barrels per day); Red line = active drilling rigs.

Production has hit record highs despite a lower rig count in recent years (source: dallasfed.org)

Location Overview: Permian Basin

Industry Trends



Production Growth: As of early 2025, the Permian Basin's oil production has reached approximately **6.2 million barrels per day (bpd)**, marking a 7.5% increase from the previous year (source: [YCharts](https://ycharts.com)).



Rig Count: The number of active drilling rigs in the basin stands at 291, a slight increase from earlier in the year but still down 4% compared to the same period last year (source: [Midland Reporter-Telegram](https://midlandreporter-telegram.com))



Investment Activity: Despite some market volatility, companies like U.S. Energy Development Corporation plan to invest up to \$1 billion in Permian projects throughout 2025, indicating **sustained confidence** in the region's potential (source: [Oil Gas Leads+IPR Newswire+1](https://oilgasleads.com))



Creating Wealth Through Real Estate

Invest Texas Real Estate, LLC is a premier commercial brokerage dedicated to delivering tailored, client-focused solutions across investment, land, and commercial transactions, leveraging deep market expertise, innovative strategies, and a commitment to accountability, integrity, and long term relationships.

Lance White

Co-Owner/Broker

(432) 894-2193

White@InvestTexas.com

Robert LaFrance

Co-Owner/Associate

(254) 855-9179

LaFrance@InvestTexas.com



Investment



Land



Commercial