





## Highlights

Modern  $\pm 8,000$  SF industrial facility on  $\pm 1.9$  acres, purpose-built for oilfield and service operations. Offers a balanced mix of shop and office space with heavy-duty utilities and secure yard to support diverse industrial uses.

### Property

Lease rate	\$18.75/SF/YR
Monthly rate	\$12,500/Month
Building size	8,000 SqFt
Lot size	1.9 acres
Available	October 1st, 2025



### Property Highlights

6,500 SqFt Shop / 1,500 SqFt Office

4 Offices

Conference Room

5 Overhead Doors (14x16)

Kitchenette

### LOCATION OVERVIEW

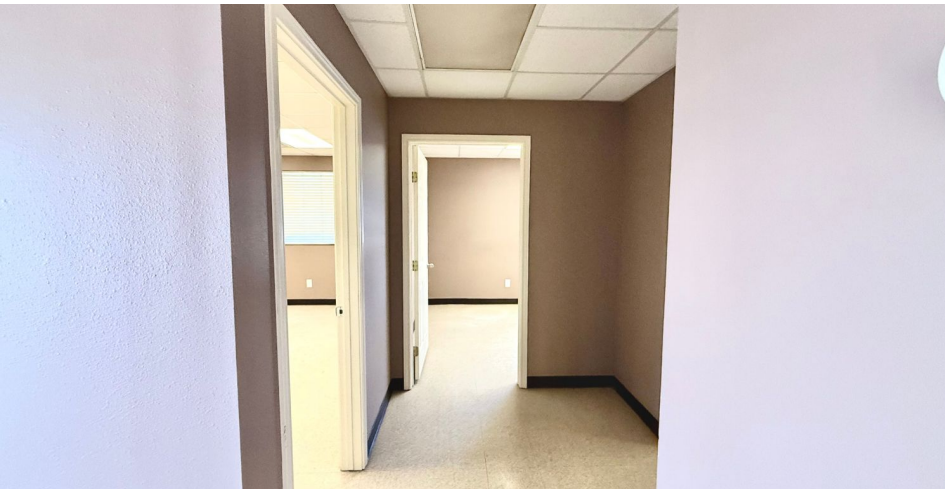
Positioned within Midland's core industrial service corridor, the property provides excellent connectivity and visibility for energy and industrial users.

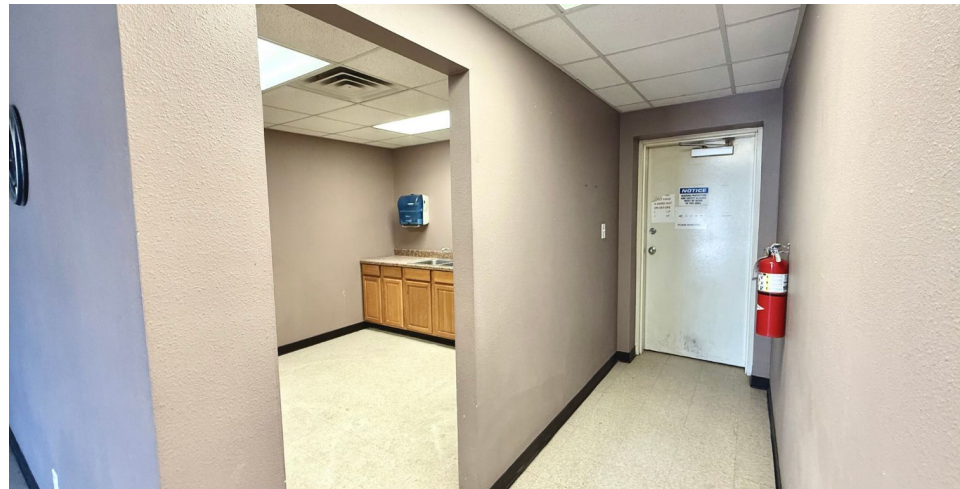
- Quick access to Interstate 20, Loop 250, and Highway 80 for regional distribution  
Roughly 15 minutes to Midland International Air & Space Port
- Surrounded by oilfield service companies, equipment yards, and energy logistics operations
- Strong location for oil & gas service, fabrication, and light industrial users seeking a Midland base



















1509 S County Rd 1309 Midland, TX 79707





Midland Airport

Hwy 191

SandBox  
LOGISTICS, LLC.

S County Rd 1309

DRILLING TOOLS<sup>®</sup>  
INTERNATIONAL

1509 S County Rd 1309 Midland, TX 79707  
[www.investtexas.com](http://www.investtexas.com)

Invest Texas<sup>®</sup>  
REAL ESTATE



Hwy 191

SandBox  
LOGISTICS, LLC.

DRILLING TOOLS<sup>®</sup>  
INTERNATIONAL

S County Rd 1309





## Creating Wealth Through Real Estate

Invest Texas Real Estate, LLC is a premier commercial brokerage dedicated to delivering tailored, client-focused solutions across investment, land, and commercial transactions, leveraging deep market expertise, innovative strategies, and a commitment to accountability, integrity, and long term relationships.

### Lance White

---

Co-Owner/Broker

(432) 894-2193

White@InvestTexas.com

### Robert LaFrance

---

Co-Owner/Associate

(254) 855-9179

LaFrance@InvestTexas.com



**Investment**



**Land**



**Commercial**