





Highlights

A clean, functional ±5,500 SF industrial shop with two large 14'x16' overhead doors and a dedicated wash bay. This space is ideal for equipment maintenance, fabrication, or oilfield service operations.

Property Details

| | |
|-------------------|------------|
| Monthly Rent | \$8,708.33 |
| Total Building SF | 5,500 |

Location Highlight

Positioned in a well-established industrial area with direct access to key transportation routes serving the Midland–Odessa region. The site provides easy in-and-out maneuverability for large trucks and service rigs and is surrounded by similar oilfield and industrial users.

- Convenient access to I-20 and key service corridors
- Surrounded by energy and logistics companies
- Ideal for equipment, fleet, and service operations

Property Details

3 Offices

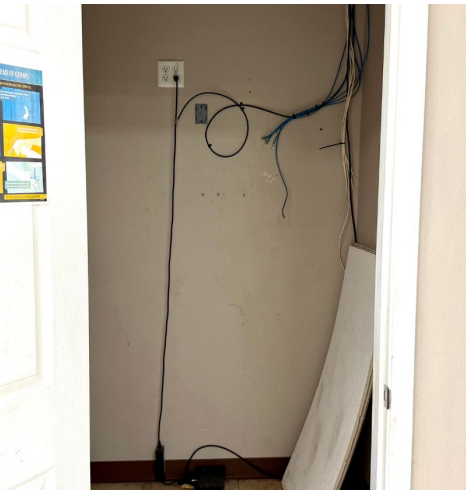
Kitchen

Fully air-conditioned shop facility

(2) 14x16 OH Door

Wash Bay











Odessa, Tx

Hwy 191



Location Overview: Permian Basin

The Permian Basin spans approximately 250 miles wide and 300 miles long across western Texas and southeastern New Mexico. It's the most prolific oil-producing region in the U.S., contributing nearly half of the nation's crude output. The basin comprises three primary sub-regions: the Midland Basin, Delaware Basin, and Central Basin Platform.



Industry Trends



Production Growth: As of early 2025, the Permian Basin's oil production has reached approximately **6.2 million barrels per day (bpd)**, marking a 7.5% increase from the previous year (source: [YCharts](#)).



Rig Count: The number of active drilling rigs in the basin stands at 291, a slight increase from earlier in the year but still down 4% compared to the same period last year (source: [Midland Reporter-Telegram](#)).



Investment Activity: Despite some market volatility, companies like U.S. Energy Development Corporation plan to invest up to \$1 billion in Permian projects throughout 2025, indicating **sustained confidence** in the region's potential (source: [Oil Gas Leads+IPR Newswire+1](#)).



Oil production and rig count in the Permian Basin, 2012–2024.

Blue line = oil output (million barrels per day); Red line = active drilling rigs.

Production has hit record highs despite a lower rig count in recent years (source: [dallasfed.org](#))



Creating Wealth Through Real Estate

Invest Texas Real Estate, LLC is a premier commercial brokerage dedicated to delivering tailored, client-focused solutions across investment, land, and commercial transactions, leveraging deep market expertise, innovative strategies, and a commitment to accountability, integrity, and long term relationships.

Lance White

Co-Owner/Broker

(432) 894-2193

White@InvestTexas.com

Robert LaFrance

Co-Owner/Associate

(254) 855-9179

LaFrance@InvestTexas.com



Investment



Land



Commercial