



TBD S. County Rd 1232  
Midland, TX 79706

**Don't Wait to Buy Real Estate,  
Buy Real Estate and Wait.**

InvestTexas.com  
(432) 777-7022



# Site Description

TBD S. County Rd 1232, Midland, TX 79706

Situated in Midland, TX—at the heart of the Permian Basin—this 79.22-acre property is an ideal location for industrial development.

- Immediately South of I-20 on the West side of Antelope Trail (SCR 1232)
- Bulk of engineering completed; only a few steps remain for final plat approval
- One of the last remaining unimproved tracts along the fast growing Antelope Trail corridor.
- Located in Midland County ETJ
- To request DD docs, site plans, sale, or lease comps, contact a team member at ITRE





# 79.22 Acres Antelope Trail

TBD S. County Rd 1232, Midland, TX 79706





# 79.22 Acres Antelope Trail

TBD S. County Rd 1232, Midland, TX 79706





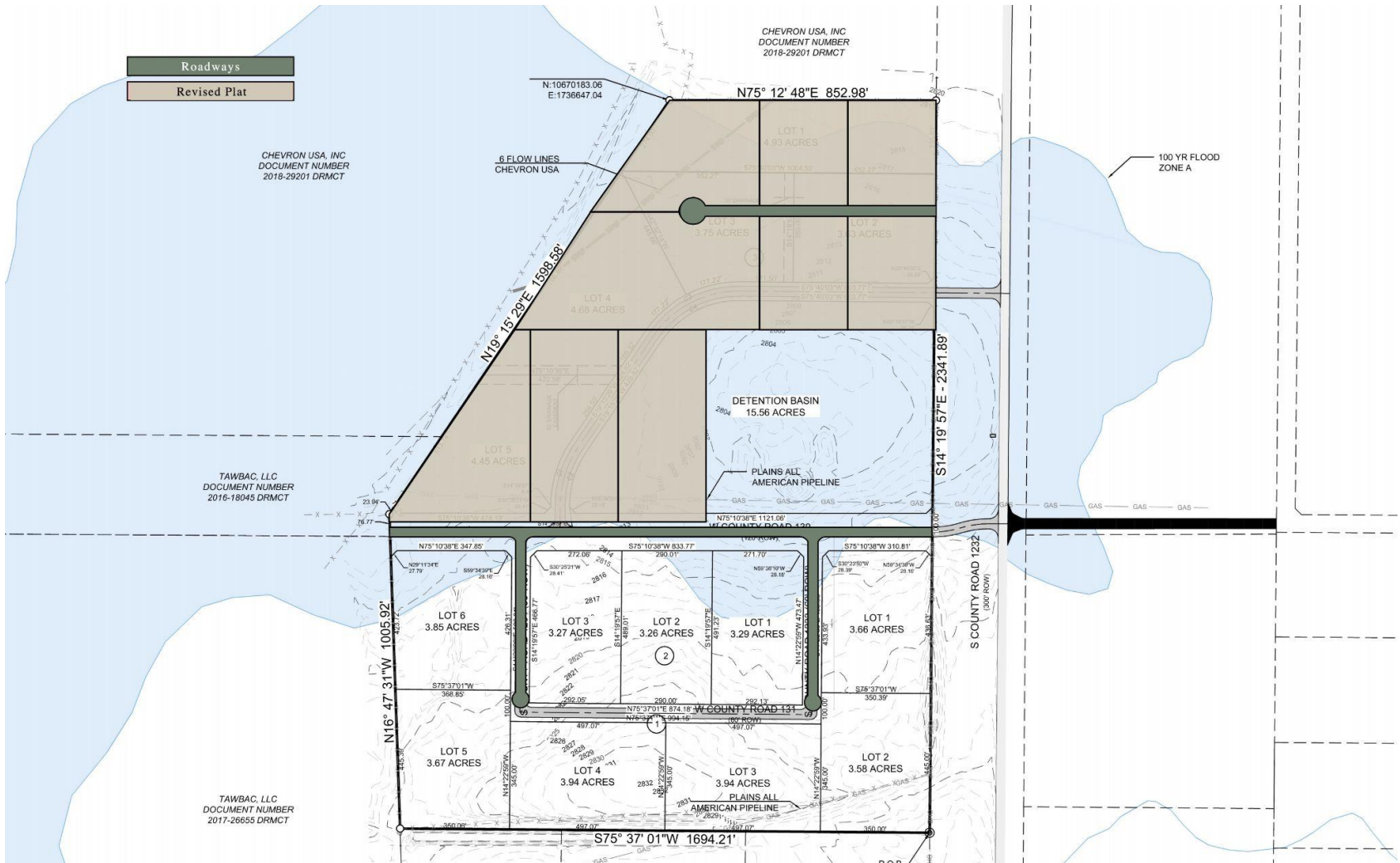
# 79.22 Acres Antelope Trail

TBD S. County Rd 1232, Midland, TX 79706



# Preliminary Subdivision Plat

**TBD S. County Rd 1232, Midland, TX 79706**







TBD S. County Rd 1232  
Midland, TX 79706  
[www.InvestTexas.com](http://www.InvestTexas.com)

  
**Invest Texas**  
REAL ESTATE



## Local Map

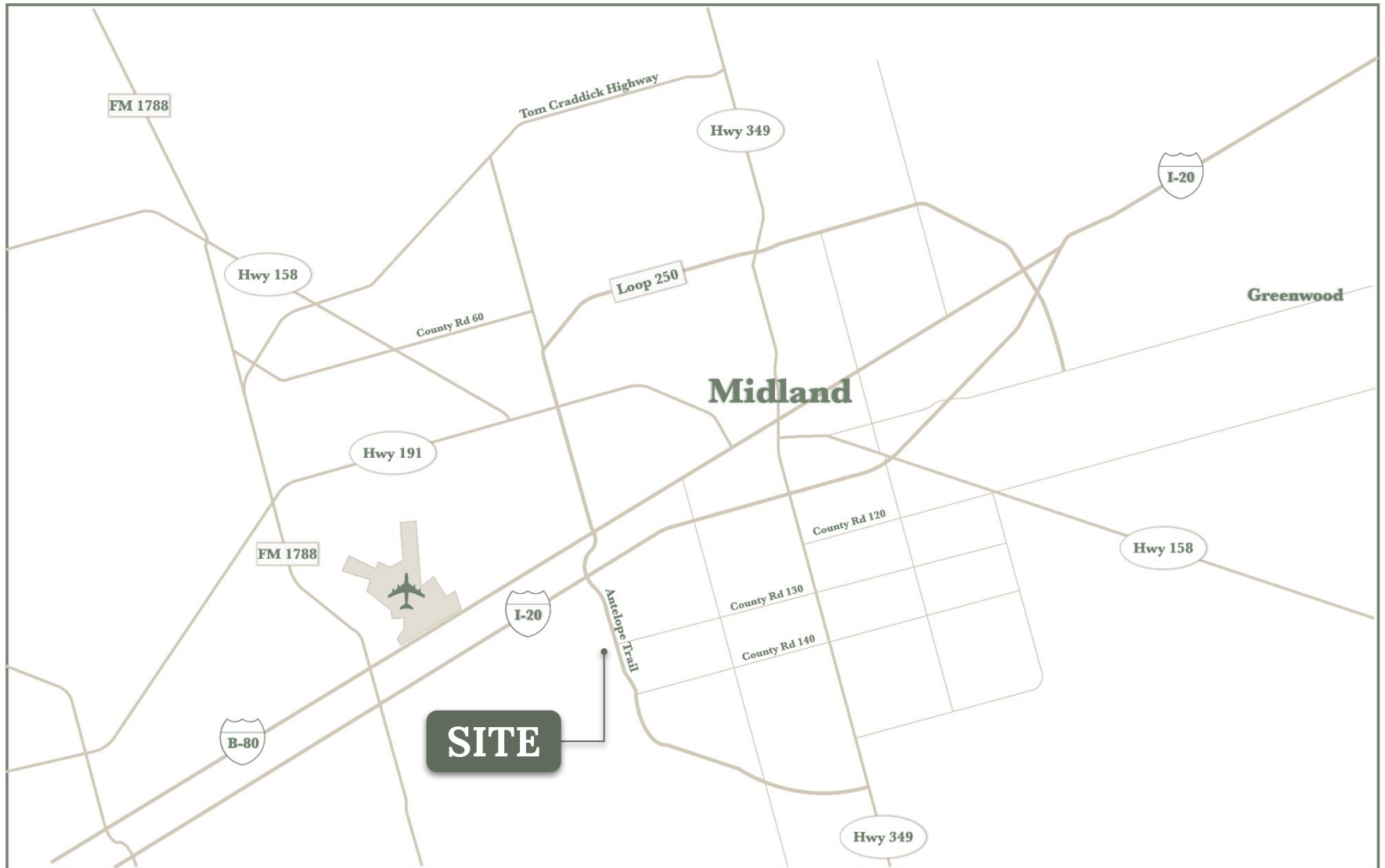
**TBD S. County Rd 1232, Midland, TX 79706**





# Regional Map

TBD S. County Rd 1232, Midland, TX 79706







## Creating Wealth Through Real Estate

Invest Texas Real Estate, LLC is a premier commercial brokerage dedicated to delivering tailored, client-focused solutions across investment, land, and commercial transactions, leveraging deep market expertise, innovative strategies, and a commitment to accountability, integrity, and long term relationships.

### Lance White

---

Co-Owner/Broker  
(432) 894-2193  
White@InvestTexas.com

### Robert LaFrance

---

Co-Owner/Associate  
(254) 855-9179  
LaFrance@InvestTexas.com



## Investment



## Land



## Commercial