





Highlights

Versatile 3-acre Midland property offering a unique live-work setup tailored for owner-operators, trucking companies, small industrial users, or service-based businesses. Featuring a 2,157 SF residential-style office/living quarters paired with an 832 SF shop, this property provides the flexibility to combine business operations, equipment storage, and on-site housing—all at an accessible price point. With ample yard space, well/septic utilities, and strategic Midland County positioning, this is an ideal opportunity for businesses seeking functional operations with long-term value.

Property Details

Sale Price	\$240,000
Total SqFt	2,939 SF
Lot Size	3 Acres
Built	1972



Property Highlights

2,157 SF 2 bed / 2 bath on 3 Acres

832 SF Shop with (1) Overhead Doors

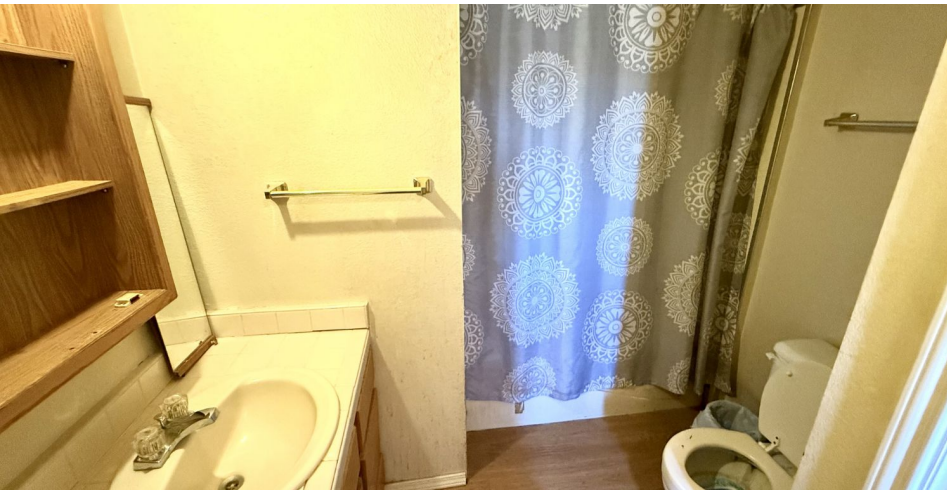
Well water + septic system

LOCATION OVERVIEW

- Positioned in Midland County with quick access to key industrial corridors
- Convenient to Midland, Odessa, and broader Permian Basin operations
- Suitable for trucking, logistics, or oilfield service companies needing regional connectivity
- Outside traditional office markets, offering operational flexibility
- Large acreage supports industrial functionality while maintaining residential utility
- Accessible location for businesses requiring yard, storage, and workspace integration









Midland, Tx



CarboNet



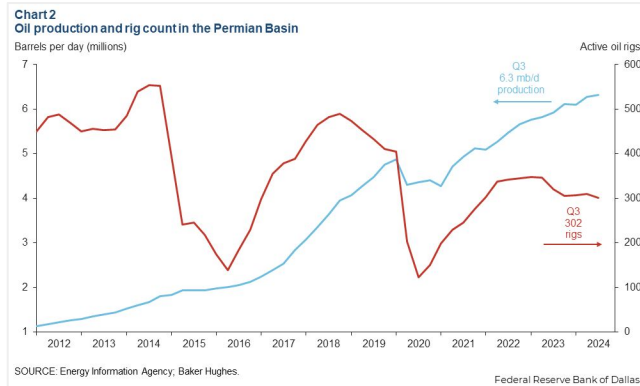
CLEARFLOW



1310 E County Rd 145
Midland, TX 79706
www.investtexas.com



The Permian Basin spans approximately 250 miles wide and 300 miles long across western Texas and southeastern New Mexico. It's the most prolific oil-producing region in the U.S., contributing nearly half of the nation's crude output. The basin comprises three primary sub-regions: the Midland Basin, Delaware Basin, and Central Basin Platform.



Oil production and rig count in the Permian Basin, 2012–2024.

Blue line = oil output (million barrels per day); Red line = active drilling rigs.

Production has hit record highs despite a lower rig count in recent years (source: dallasfed.org)

Location Overview: Permian Basin

Industry Trends



Production Growth: As of early 2025, the Permian Basin's oil production has reached approximately **6.2 million barrels per day (bpd)**, marking a 7.5% increase from the previous year (source: [YCharts](https://ycharts.com)).



Rig Count: The number of active drilling rigs in the basin stands at 291, a slight increase from earlier in the year but still down 4% compared to the same period last year (source: [Midland Reporter-Telegram](https://midlandreporter-telegram.com)).



Investment Activity: Despite some market volatility, companies like U.S. Energy Development Corporation plan to invest up to \$1 billion in Permian projects throughout 2025, indicating **sustained confidence** in the region's potential (source: [Oil Gas Leads+IPR Newswire+1](https://oilgasleads.com)).



Creating Wealth Through Real Estate

Invest Texas Real Estate, LLC is a premier commercial brokerage dedicated to delivering tailored, client-focused solutions across investment, land, and commercial transactions, leveraging deep market expertise, innovative strategies, and a commitment to accountability, integrity, and long term relationships.

Chris Mullinix

Sales Associate
(432) 269-0070
Mullinix@InvestTexas.com

Tyler Hudgins

Senior Advisor
(432) 634-8057
Hudgins@InvestTexas.com



Investment



Land



Commercial