





Highlights

Well-maintained 7,500 SF industrial facility offering a practical combination of office and shop space for oilfield service providers, contractors, logistics companies, and industrial users. The property's functional layout, drive-through capability, and strategic Odessa location make it an excellent solution for companies supporting operations throughout the Permian Basin.

Property Details

| | |
|-------------------|---------|
| Rent/SF/YR | \$19.00 |
| Total Building SF | 5,500 |
| Acres | 1.7 |

Property Details

1,800 SqFt Office + 3,700 SqFt Shop

3 Offices, Large Reception, Breakroom

4 OH Doors/1 Drive Through Bays

(2) Bathroom

Location Highlight

Positioned directly on Highway 191, one of Midland's primary industrial and oilfield service corridors. The property provides exceptional access to the Midland Basin, major energy operators, and surrounding industrial developments, making it an ideal hub for field operations and equipment deployment.

- Direct frontage and access from Highway 191
- Minutes from FM 1788, Loop 250, and Midland International Air & Space Port
- Surrounded by established oilfield service, manufacturing, and logistics companies



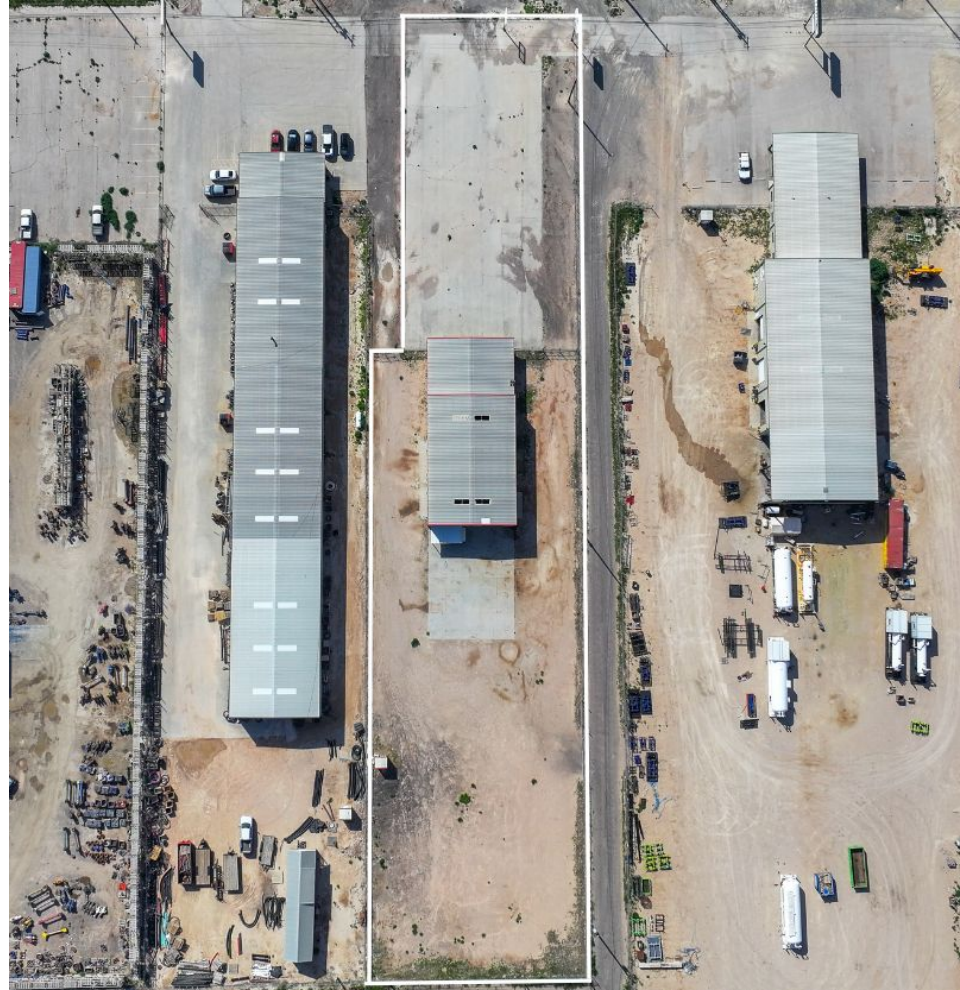
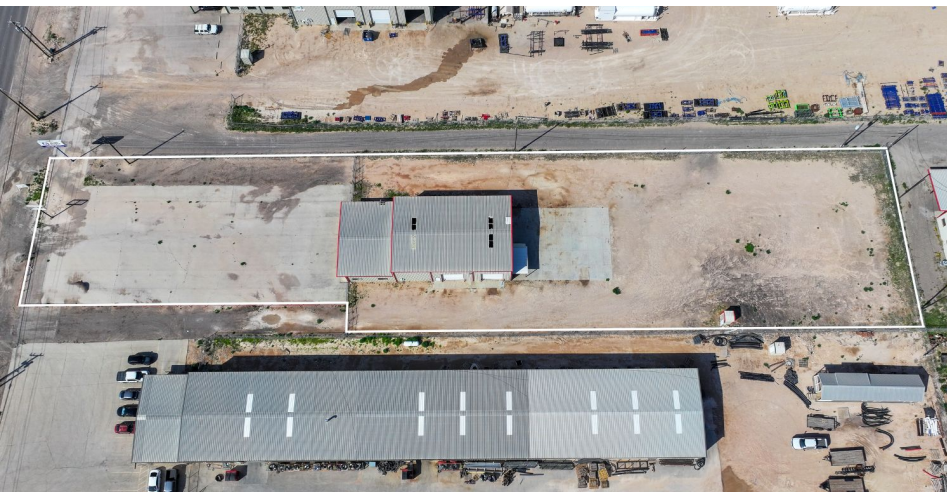












Odessa, Tx

Hwy 191

A collection of logos for various industrial and construction-related companies. The logos include: SUPREME (a shield with a blue and yellow design), TITUS CRANE SERVICES (a red shield with a white cross), JAYELLA FIELD SERVICES (a black and white logo with a figure), DANNY'S ASPHALT PAVING INC. (a red and white logo), EAGLE (a circular logo with an eagle), SandBox A US EUCIA COMPANY (a green and white logo), and DRILLING TOOLS INTERNATIONAL (a white logo with a drill bit).

Location Overview: Permian Basin

The Permian Basin spans approximately 250 miles wide and 300 miles long across western Texas and southeastern New Mexico. It's the most prolific oil-producing region in the U.S., contributing nearly half of the nation's crude output. The basin comprises three primary sub-regions: the Midland Basin, Delaware Basin, and Central Basin Platform.



Industry Trends



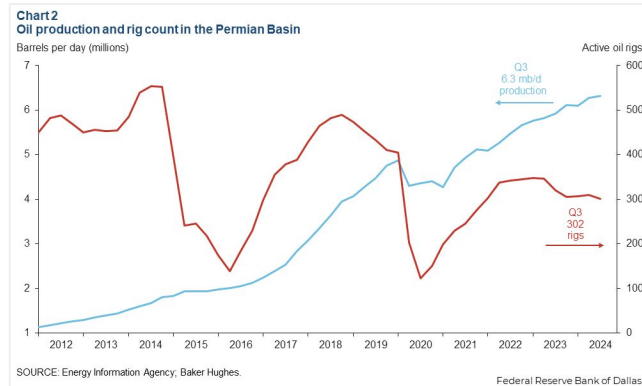
Production Growth: As of early 2025, the Permian Basin's oil production has reached approximately **6.2 million barrels per day (bpd)**, marking a 7.5% increase from the previous year (source: [YCharts](#)).



Rig Count: The number of active drilling rigs in the basin stands at 291, a slight increase from earlier in the year but still down 4% compared to the same period last year (source: [Midland Reporter-Telegram](#)).



Investment Activity: Despite some market volatility, companies like U.S. Energy Development Corporation plan to invest up to \$1 billion in Permian projects throughout 2025, indicating **sustained confidence** in the region's potential (source: [Oil Gas Leads+IPR Newswire+1](#)).



Oil production and rig count in the Permian Basin, 2012–2024.

Blue line = oil output (million barrels per day); Red line = active drilling rigs.

Production has hit record highs despite a lower rig count in recent years (source: [dallasfed.org](#))



Creating Wealth Through Real Estate

Invest Texas Real Estate, LLC is a premier commercial brokerage dedicated to delivering tailored, client-focused solutions across investment, land, and commercial transactions, leveraging deep market expertise, innovative strategies, and a commitment to accountability, integrity, and long term relationships.

Tyler Hudgins

Senior Advisor
(432) 634-8057
Hudgins@InvestTexas.com

Chris Mullinix

Sales Associate
(432) 269-0070
Mullinix@InvestTexas.com



Investment



Land



Commercial