





# Highlights

Well-maintained 7,500 SF industrial facility offering a strong combination of professional office space and functional shop capabilities. Designed to support oilfield service companies, contractors, logistics providers, and industrial users, the property provides a move-in-ready solution with infrastructure that supports both administrative and field operations.

## Lease Property Details

Rent/SF/YR	\$15.00
Total Building SF	7,500
Acres	0.71
Min. Lease Term	3 yr

## Sale Property Details

Sale Price	\$1,100,000.00
Total Building SF	7,500
Acres	0.71

### Property Details

2,000 SqFt Office + 5,500 Sqft Shop

6 Offices + Reception + Breakroom

2 OH Doors

(2) Bathroom + (2) Showers

## Location Highlight

Positioned in southeast Odessa within a well-established industrial corridor serving the Permian Basin. The property offers efficient access for field personnel, equipment, and service fleets supporting operations throughout the Midland and Delaware Basins.

- Convenient access to Interstate 20 and FM 1788
- Quick access to Midland International Air & Space Port
- Ideal for field service, equipment, fleet, and logistics-based businesses
- Centrally located for servicing both Midland and Delaware Basin activity areas

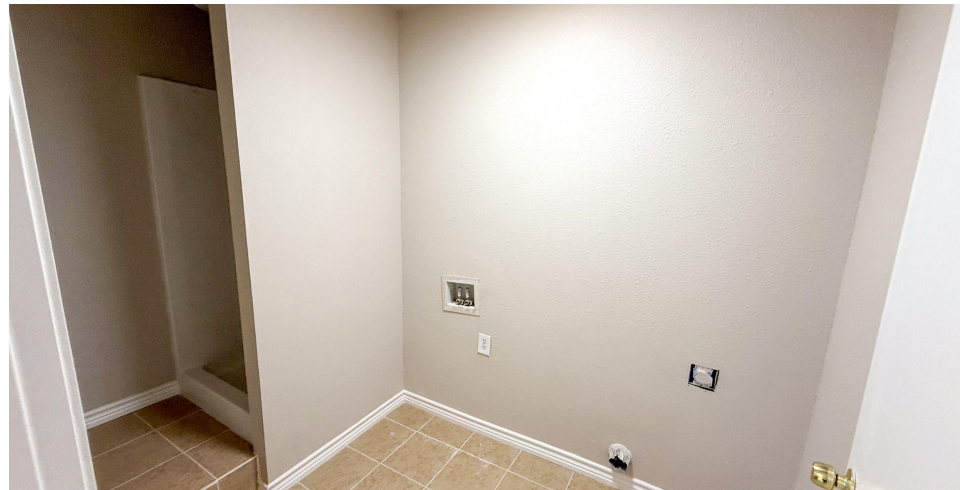
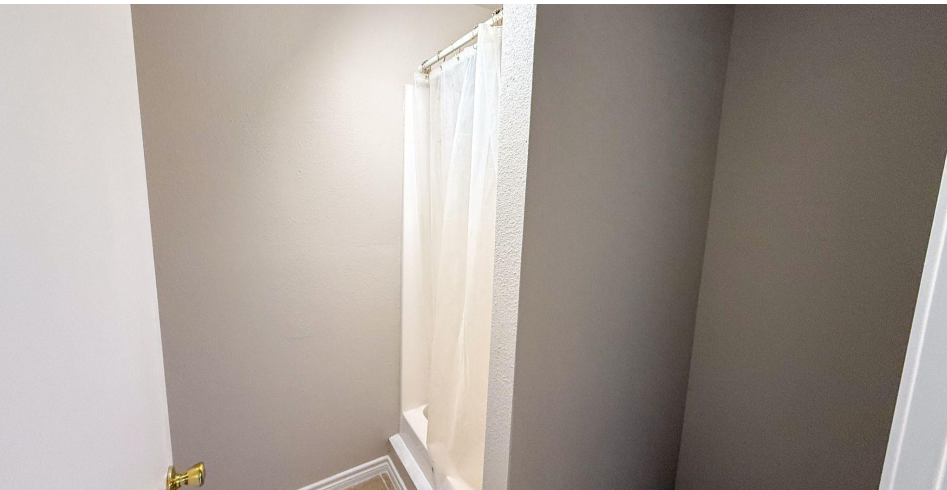
7007 S County Rd 1283, Odessa, TX 79765







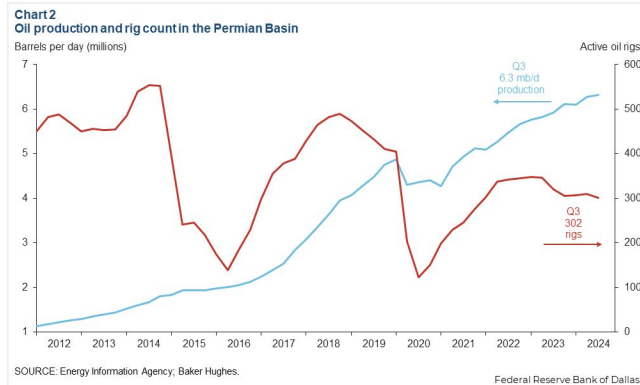








The Permian Basin spans approximately 250 miles wide and 300 miles long across western Texas and southeastern New Mexico. It's the most prolific oil-producing region in the U.S., contributing nearly half of the nation's crude output. The basin comprises three primary sub-regions: the Midland Basin, Delaware Basin, and Central Basin Platform.



*Oil production and rig count in the Permian Basin, 2012–2024.*

*Blue line = oil output (million barrels per day); Red line = active drilling rigs.*

*Production has hit record highs despite a lower rig count in recent years (source: [dallasfed.org](https://www.dallasfed.org))*

# Location Overview: Permian Basin

## Industry Trends



**Production Growth:** As of early 2025, the Permian Basin's oil production has reached approximately **6.2 million barrels per day (bpd)**, marking a 7.5% increase from the previous year (source: [YCharts](https://ycharts.com)).



**Rig Count:** The number of active drilling rigs in the basin stands at 291, a slight increase from earlier in the year but still down 4% compared to the same period last year (source: [Midland Reporter-Telegram](https://www.midlandreporter-telegram.com)).



**Investment Activity:** Despite some market volatility, companies like U.S. Energy Development Corporation plan to invest up to \$1 billion in Permian projects throughout 2025, indicating **sustained confidence** in the region's potential (source: [Oil Gas Leads+IPR Newswire+1](https://www.oilgasleads.com)).



## Creating Wealth Through Real Estate

Invest Texas Real Estate, LLC is a premier commercial brokerage dedicated to delivering tailored, client-focused solutions across investment, land, and commercial transactions, leveraging deep market expertise, innovative strategies, and a commitment to accountability, integrity, and long term relationships.

### **Tyler Hudgins**

---

Senior Advisor  
(432) 634-8057  
Hudgins@InvestTexas.com

### **Chris Mullinix**

---

Sales Associate  
(432) 269-0070  
Mullinix@InvestTexas.com



**Investment**



**Land**



**Commercial**